



**IBA\_HAMBURG**

Internationale Bauausstellung

**Hamburg voraus**

# Public and Private Sector Leadership and the IBA

---

Uli Hellweg  
Managing Director, IBA Hamburg GmbH



BUILDING ENERGY 12  
Boston, March 8th, 2012

## Free and Hanseatic City of Hamburg

1,79 Million inhabitants – 2<sup>nd</sup> largest city in Germany



Centre of Northern Germany –  
4.3 Million people in the  
*Metropolitan Region of Hamburg*



... more on [www.wikipedia.org](http://www.wikipedia.org)...

## City of Hamburg: A Grand Maritime Tradition



# Location of Hamburg in the Elbe estuary



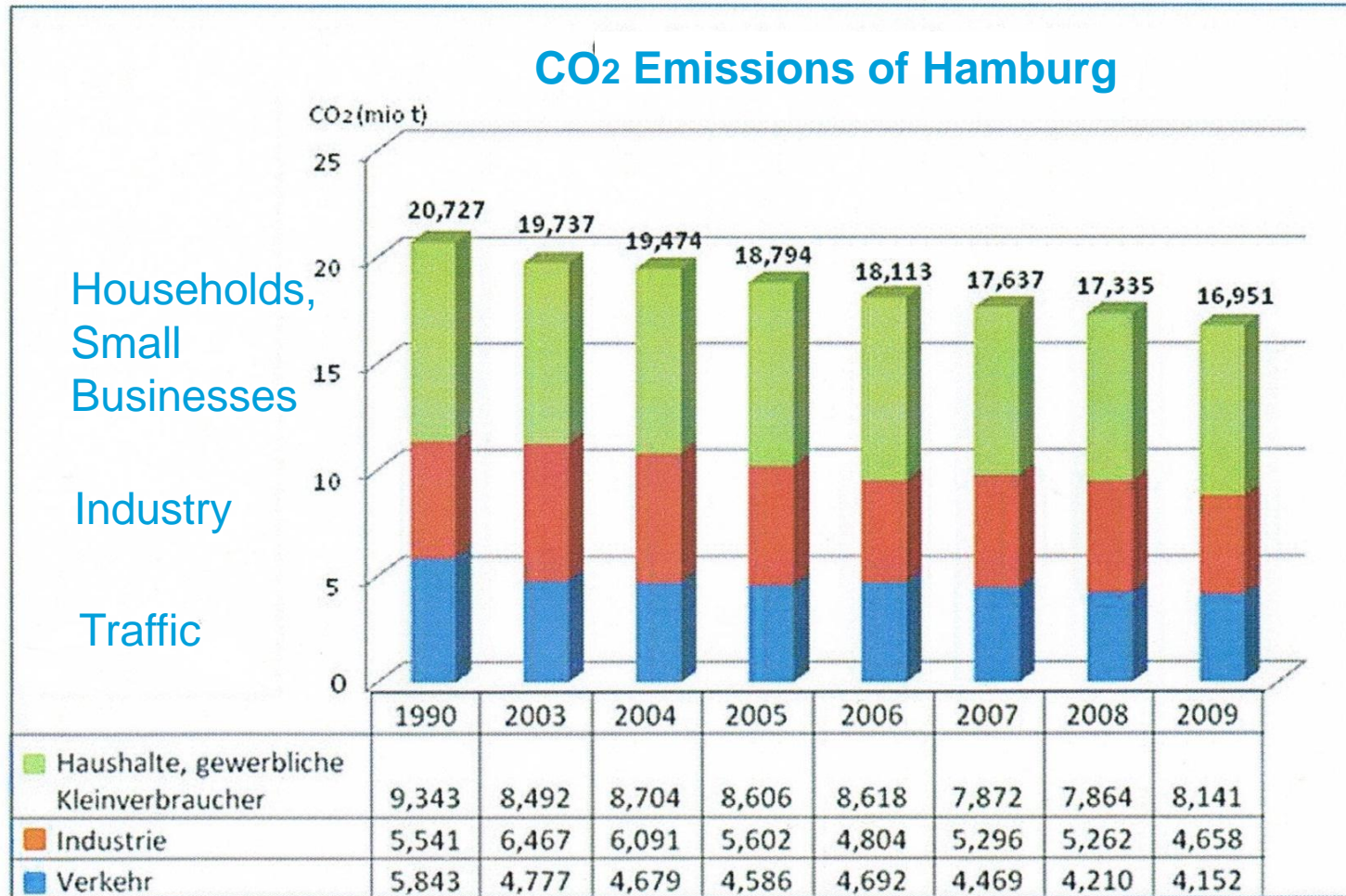
## EUROPEAN GREEN CAPITAL 2011



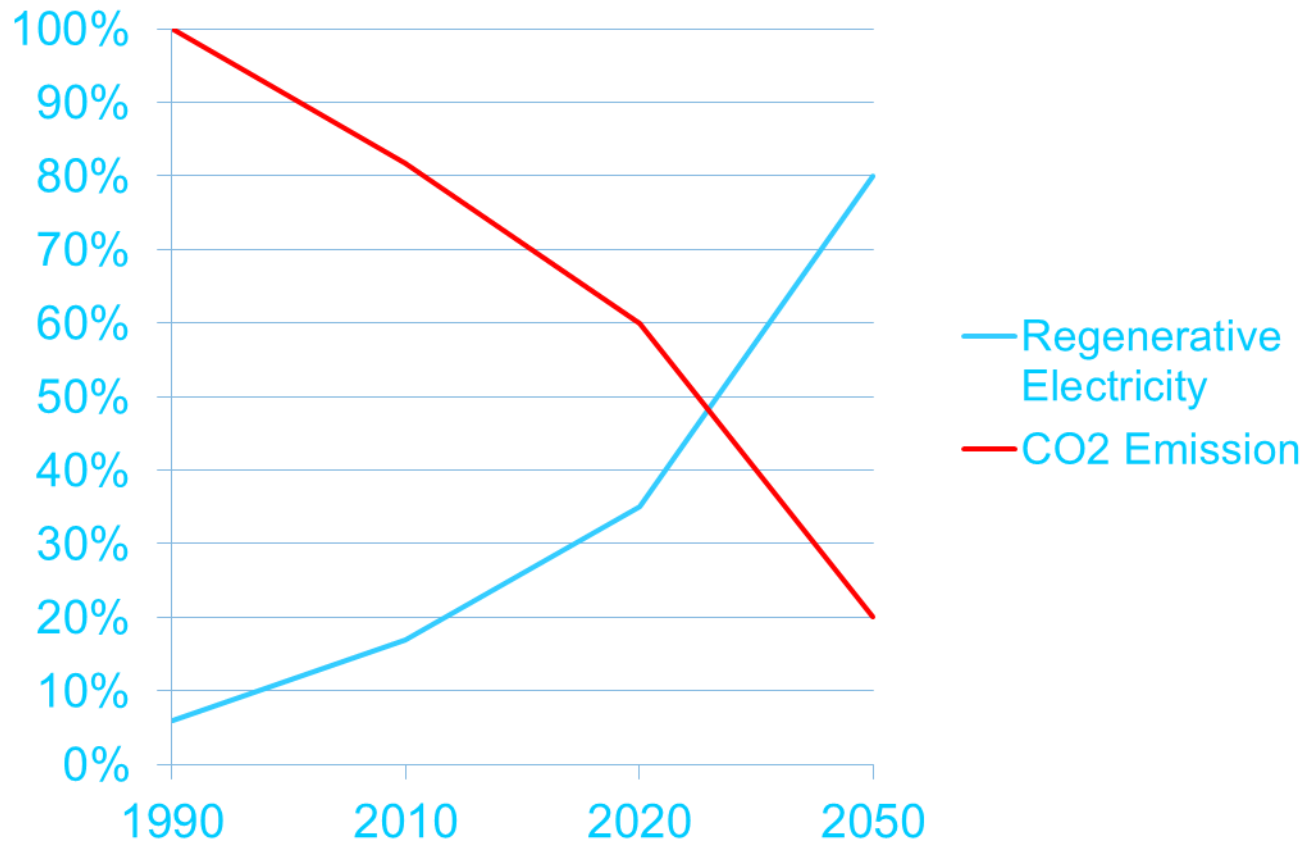
Train of Ideas – spreading the word



# Hamburg Climate Action Plan (2011)

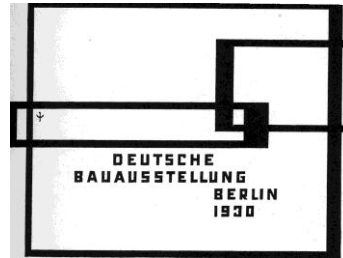


## Hamburg's Climate Protection Targets





# International Building Exhibitions Driving architectural visions and urban development



Internationale  
Bauausstellung  
Emscher Park

see



## IBA Berlin 1984/87 and IBA Emscherpark 1999





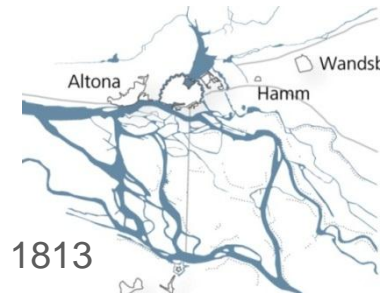


# History of embankments and dykes/levees

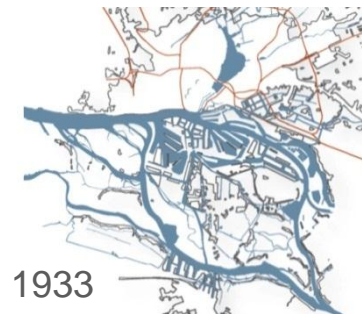
## Historic Map by Melchior Lorichs (1568)



17th century



1813



1933

## Wilhelmsburg: storm surge, February 16th, 1962

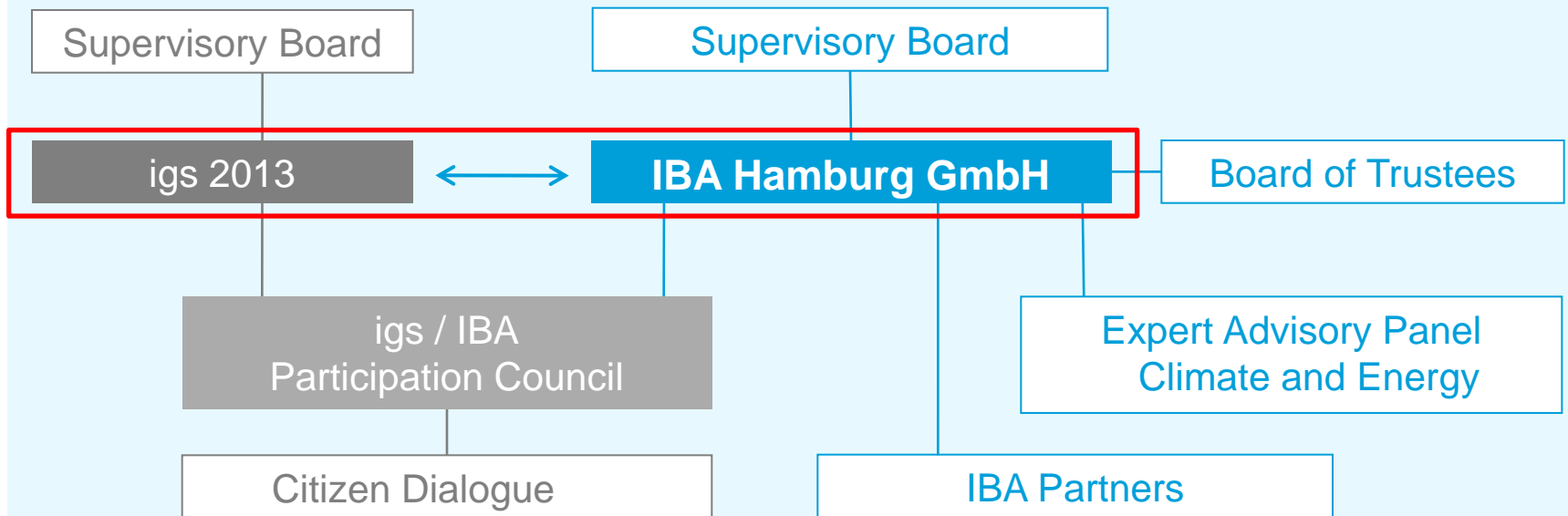




# IBA Hamburg GmbH

## Political-administrative levels

citizenry | senate | districts





## Building the City Anew

### Three key themes:

#### 1. Cities and Climate Change

- Use local sources of energy.
- Build in climate neutral manner.
- Rethink urban development by and with the water.



#### 2. Cosmopolis

- Make globalization a productive process.
- Create an international urban community.
- Greater power to education, knowledge and culture.

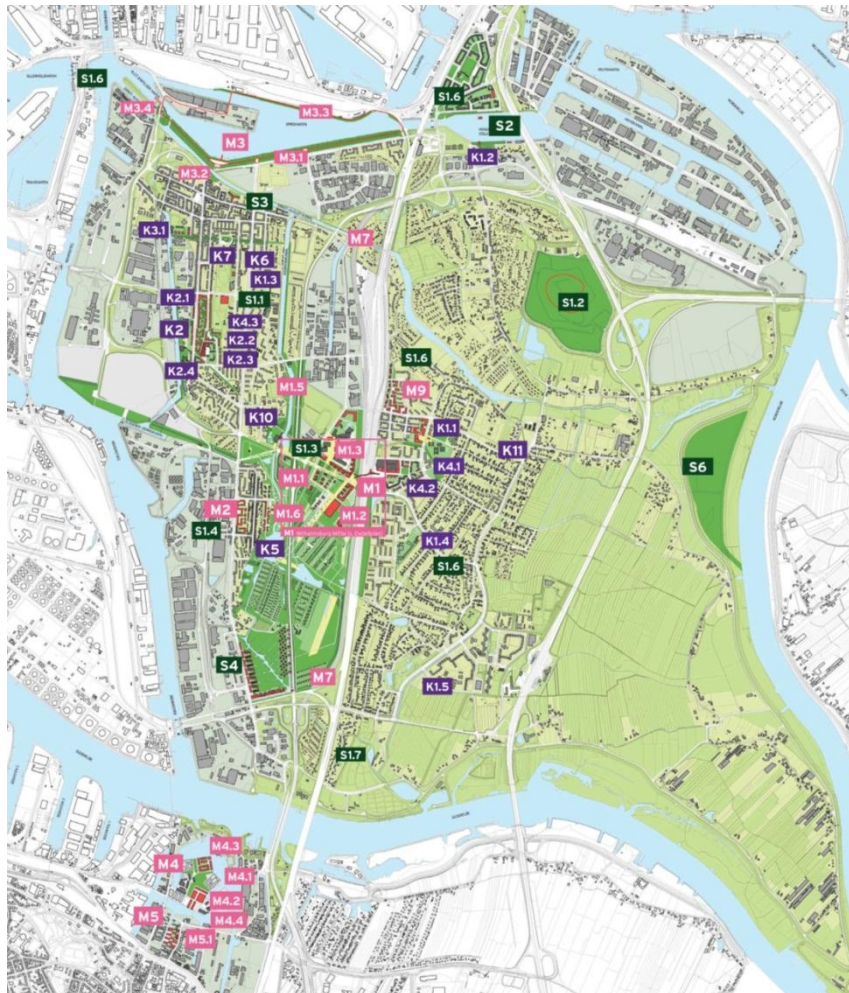


#### 3. Metrozones

- Create quality urban neighbourhoods.
- Give shape to inner peripheries.
- Promote urban compatibilities.



# IBA Hamburg: Key themes and projects



## Leitthema Stadt im Klimawandel - Neue Energien für die Stadt

- S1 Klimaschutzkonzept Erneuerbares Wilhelmsburg
- S1.1 Energiebunker
- S1.2 Energieberg Georgswerder
- S1.3 Energieverbund Wilhelmsburg Mitte
- S1.4 Tiefengeothermie Wilhelmsburg
- S1.6 Prima Klima-Anlage (5 Projekte)
- S1.7 VELUX Model Home 2020 - LichtAktiv Haus
- S2 IBA DOCK
- S3 Open House
- S4 Klimahäuser Haulander Weg
- S6 Deichpark Elbinsel
- S6.1 Pilotprojekt Kreeftsand

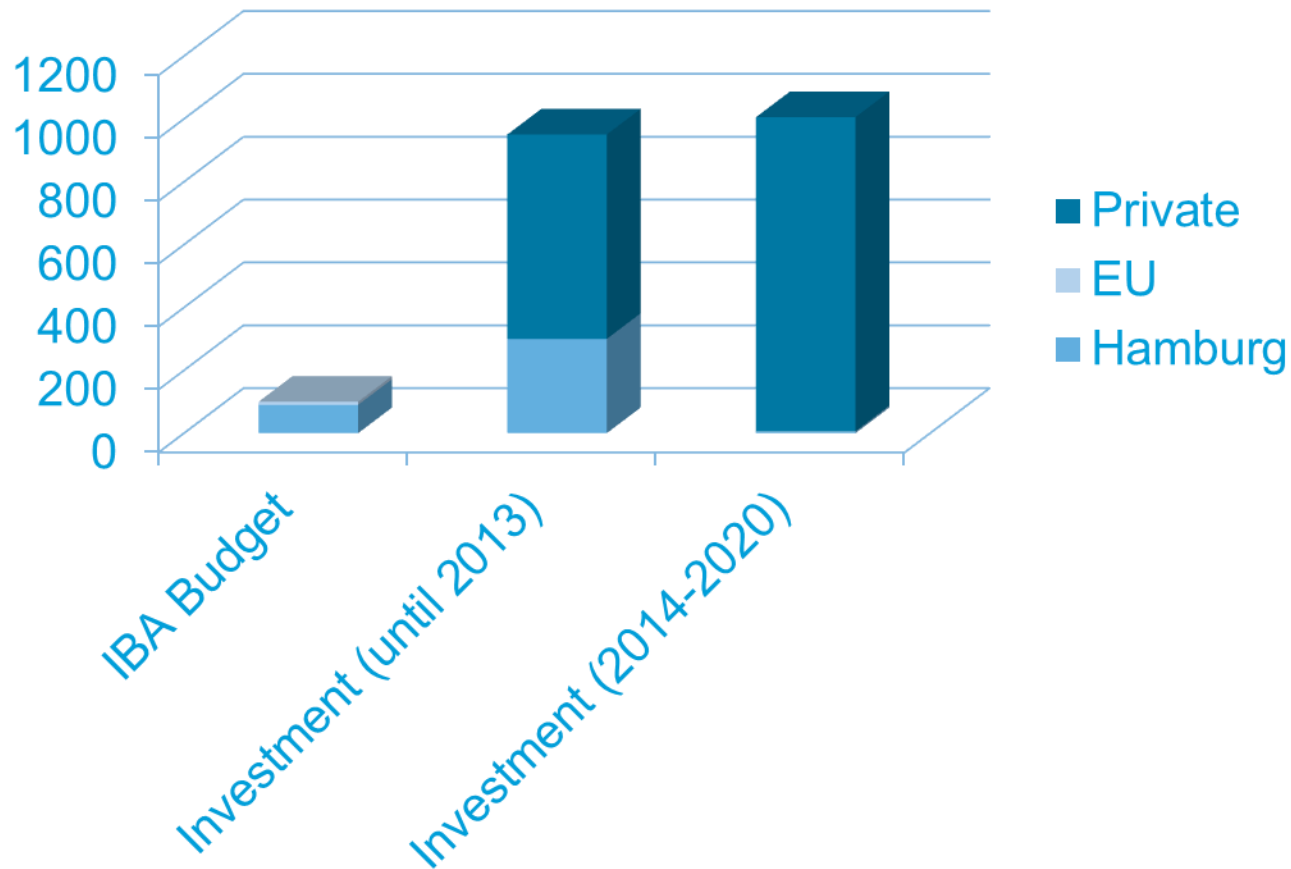
## Leitthema Metrozonen - Neue Räume für die Stadt

- M1 Wilhelmsburg Mitte
- M1.1 Bauausstellung in der Bauausstellung
- M1.1.1 Hybrid Houses
- M1.1.2 Smart Material Houses
- M1.1.3 Smart Price Houses
- M1.1.4 Water Houses
- M1.2 Wohn-, Dienstleistungs- und Hallenkomplex
- M1.3 Neubau der Behörde für Stadtentwicklung und Umwelt
- M1.4 S-Bahnhof Wilhelmsburg und Fußgängerbrücke
- M1.5 Schiffbarmachung der Rathauswehtern
- M1.6 Ausbau Kanustrecke und Wasserbecken
- M2 Georg-Wilhelm-Höfe
- M3 Öffnung des Spreehafens
- M3.1 Erschließung und Freiflächengestaltung
- M3.2 Verbindung Spreehafen - Stübenplatz
- M3.3 Rundweg Spreehafen
- M3.4 Fähranleger am Klütjenfelder Hafen
- M4 Harburger Schloßinsel
- M4.1 Park auf der Schloßinsel
- M4.2 Quartier am Park
- M4.3 Marina auf der Schloßinsel
- M4.4 Brückenschlag auf die Harburger Schloßinsel
- M5 Harburger Binnenhafen
- M5.1 Maritimes Wohnen am Kaufhauskanal
- M7 Verlegung der Wilhelmsburger Reichsstraße
- M9 Neues Korallusviertel

## Leitthema Kosmopolis - Neue Chancen für die Stadt

- K1 Bildungsoffensive Elbinseln
- K1.1 Bildungszentrum Tor zur Welt
- K1.2 Haus der Projekte
- K1.3 Sprach- und Bewegungszentrum
- K1.4 MEDIA DOCK Elbinseln
- K1.5 PraxisLernen am Bildungszentrum Stübenhofer Weg
- K2 Weltquartier
- K2.1 Altbauanierung, Wohnungsneubau, Freiraum
- K2.2 Weimarer Platz
- K2.3 Pavillon auf dem Weimarer Platz
- K2.4 Welt-Gewerbehof
- K3 Kreatives Quartier Elbinseln
- K3.1 Kunst- und Kreativzentrum Veringhöfe
- K3.3 Kunst macht Arbeit (nicht verortet)
- K4 Interkulturelle öffentliche Räume
- K4.1 MultiCOOLtIPark
- K4.2 Neugestaltung Berta-Kröger-Platz
- K4.3 Rotenhäuser Feld
- K5 Neue Hamburger Terrassen
- K6 Universität der Nachbarschaften
- K7 Veringeck
- K10 Hausgemeinschaft Neue Mitte
- K11 Backhaus an der Windmühle Johanna

## Public and Private Investment (in Million €)



## IBA Hamburg: statistics

### IBA building projects:

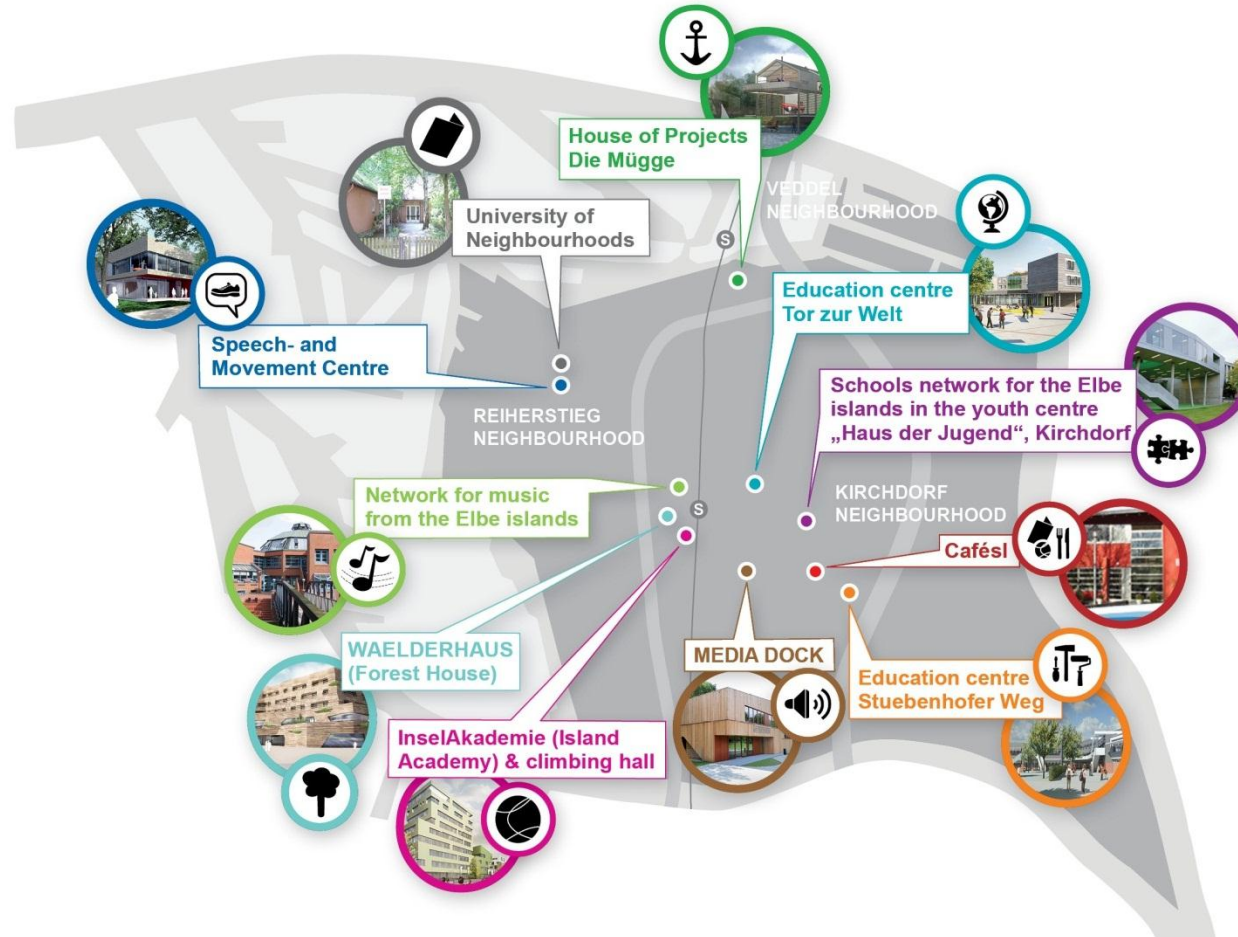
- New dwellings: 1,100 units
- Energy refurbishments: 449 units
- Offices and services: 974,134 sq. ft/90,500 sq.m
- Social infrastructure (multicultural facilities for senior citizens, children's day care center, sport facilities like a pool hall, basket ball hall)

### Open and green spaces:

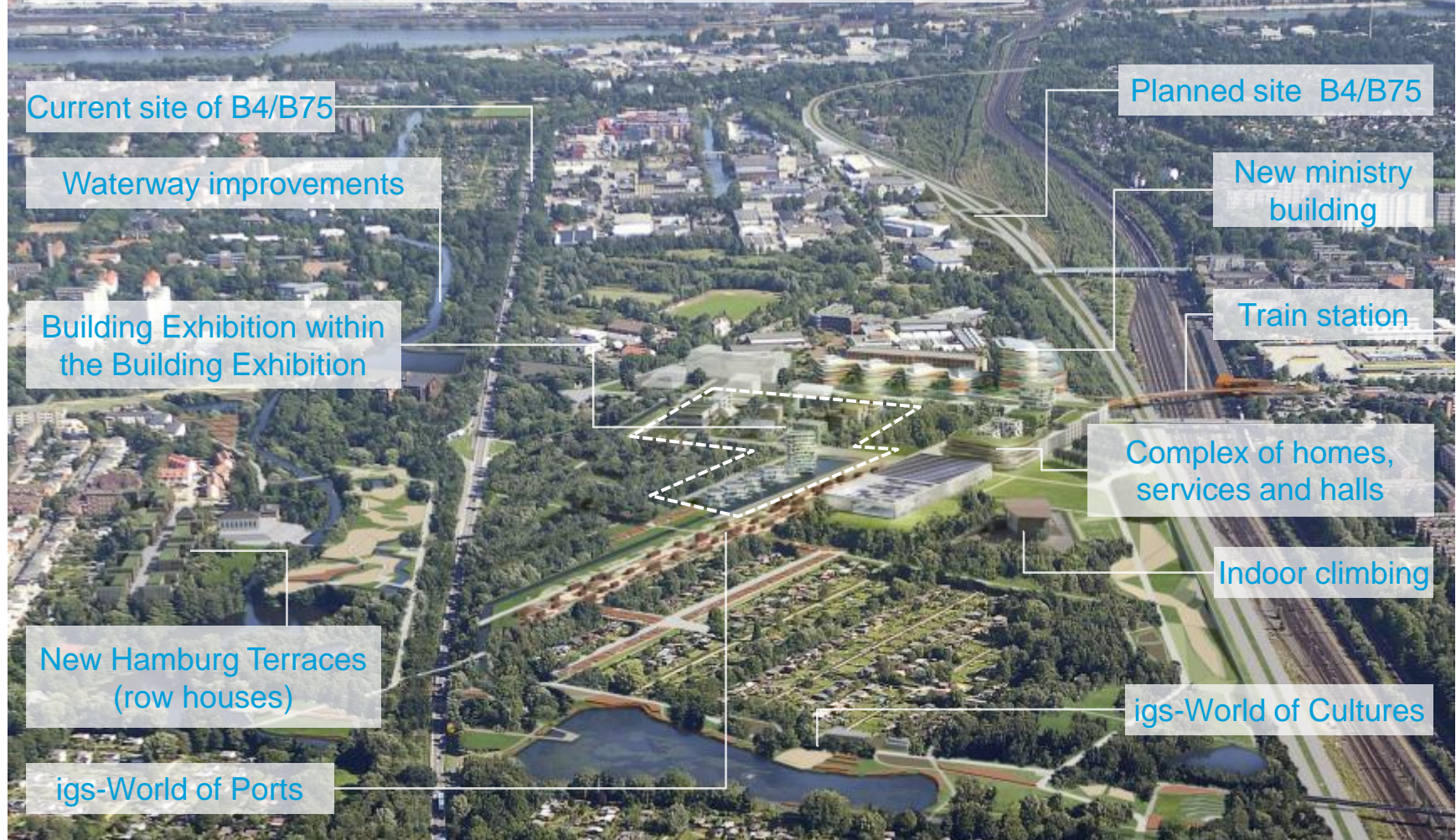
- Parks, opened-up port facilities : 176.68 acres/71.5 ha
- International Garden Show: 247.11 acres/100 ha
- New waterways: 1.68 miles/2.7 km

# Educational landscape of the Elbe islands

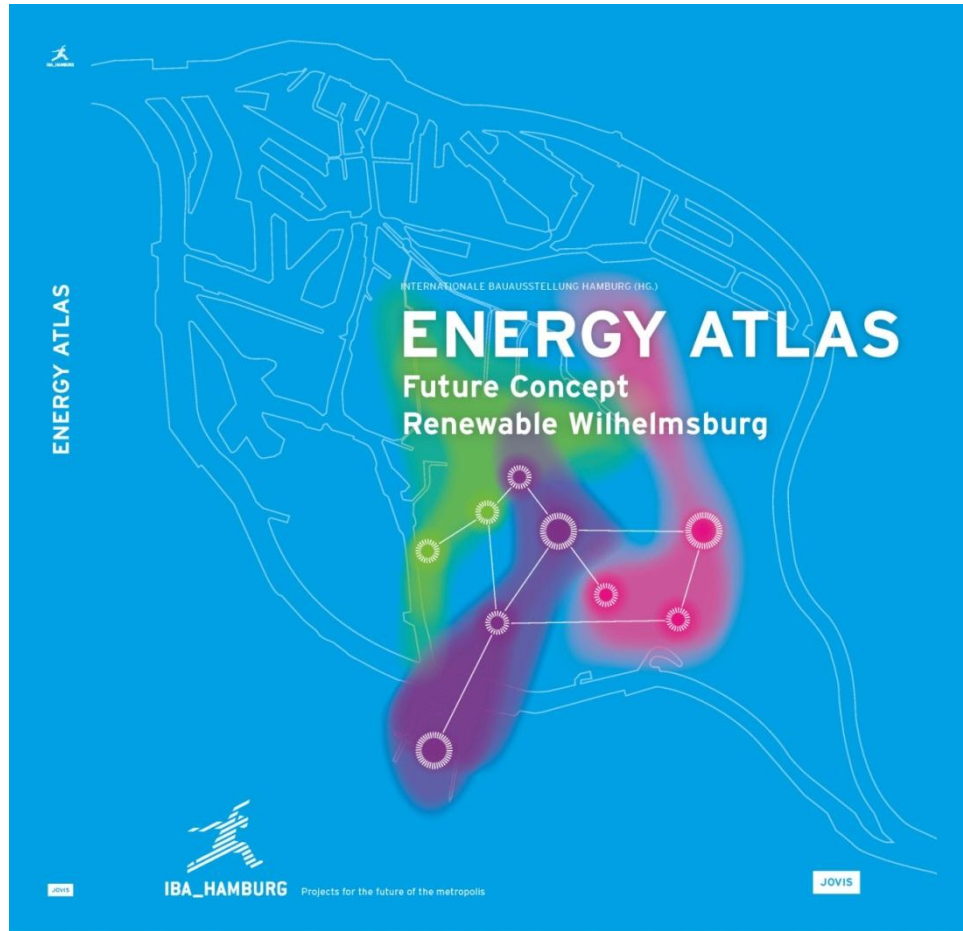
## New educational facilities and networks



# Wilhelmsburg Mitte – outlook for 2013



## Future Concept for a Renewable Wilhelmsburg



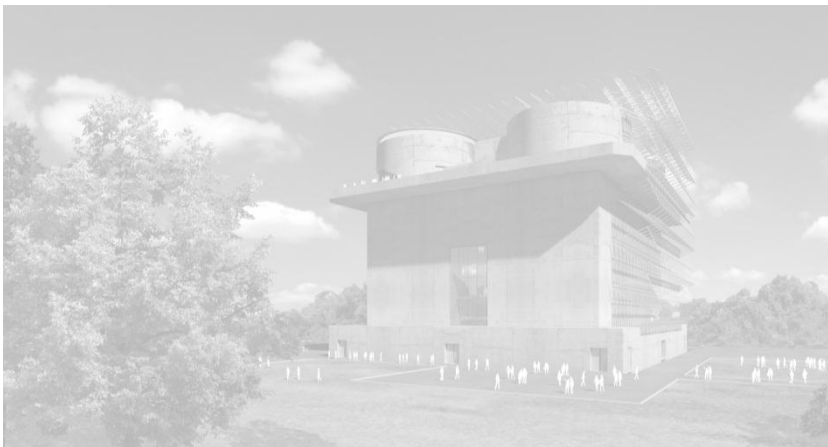
# Urban space and building typologies in Wilhelmsburg





## Strategic Operational Fields of the Future Concept

Refurbishing into  
New Building  
Standard

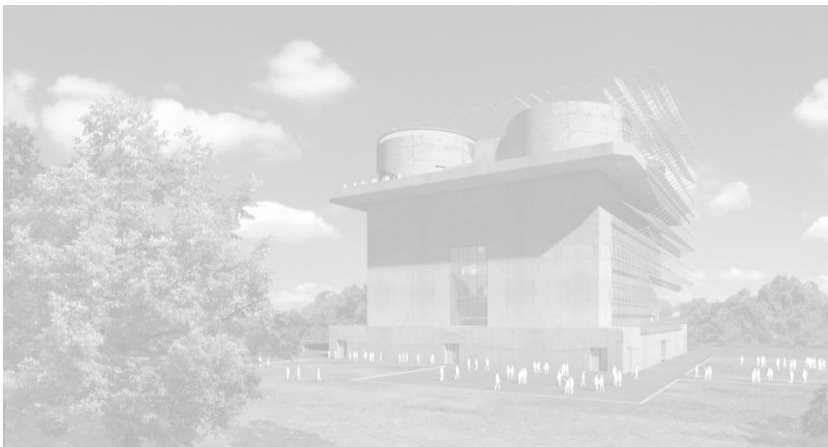


## Strategic Operational Fields of the Future Concept

**Refurbishing into  
New Building  
Standard**



**Energetically  
Excellent New  
Buildings**



## Strategic Operational Fields of the Future Concept

**Refurbishing into  
New Building  
Standard**



**Energetically  
Excellent New  
Buildings**



**Regenerative  
Heating Network**



## Strategic Operational Fields of the Future Concept

**Refurbishing into  
New Building  
Standard**



**Energetically  
Excellent New  
Buildings**



**Regenerative  
Heating Network**



**Renewable  
Energies**



## Energy Hill Georgswerder



Aufwind-Luftbilder

## PV and wind turbines on „Energy Hill“



## Energy Hill Georgswerder

### Hilltop look-out and energy landscape

Controlled access to and redesign of landfill

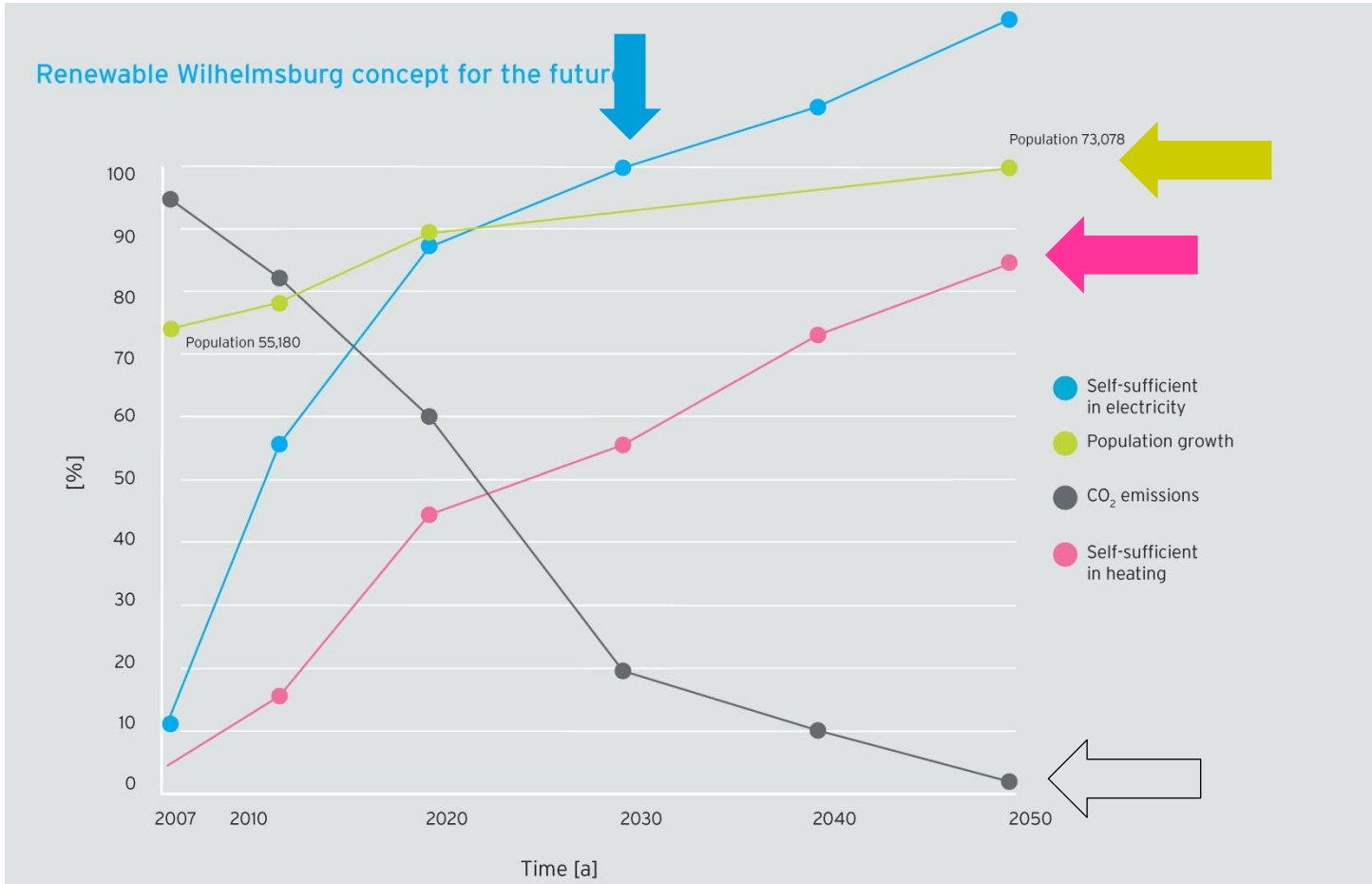
### Exhibition and documentation centre

History of the landfill and use of renewable energy

### Progress from “non-place” to a meeting place and energy producer

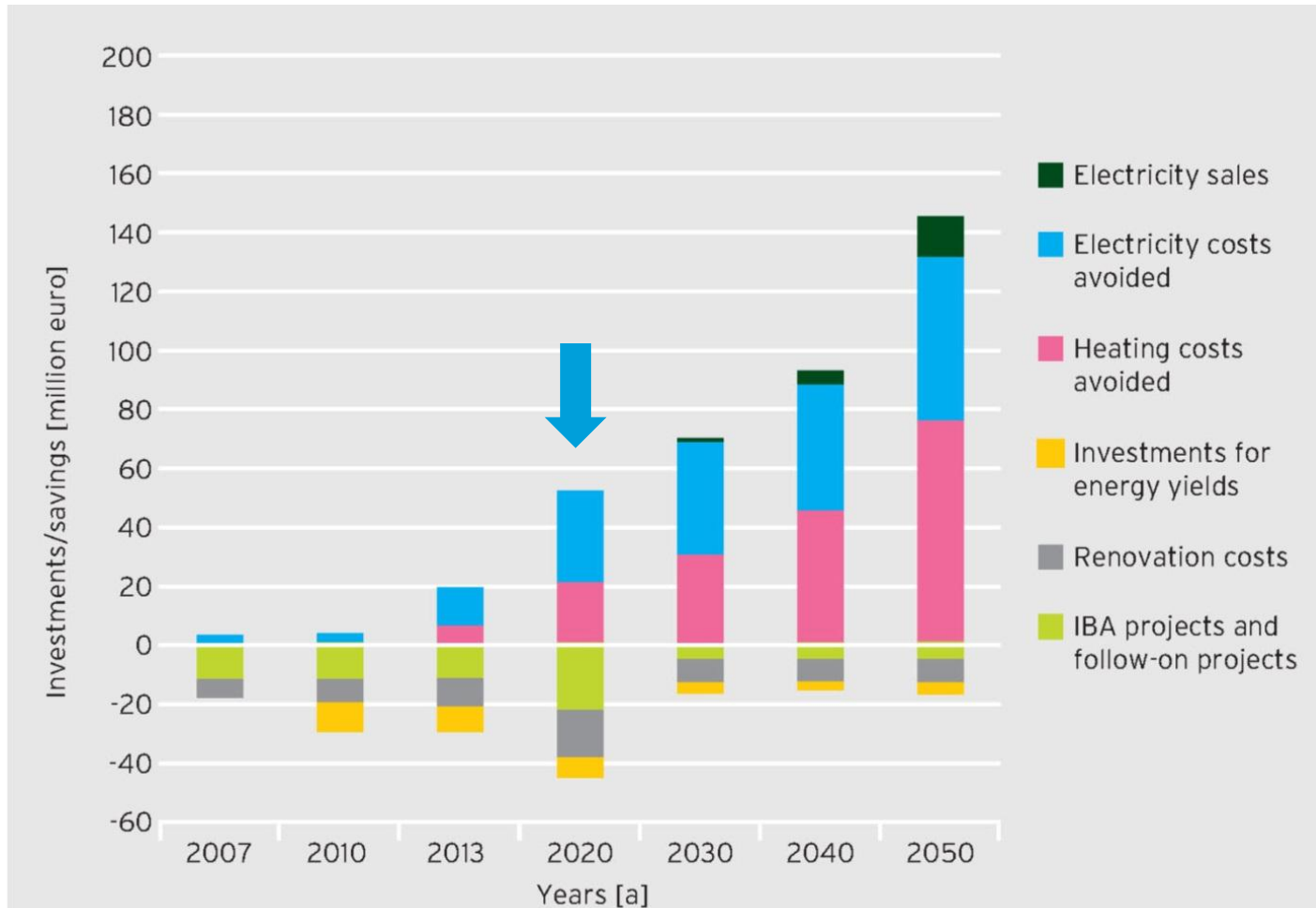


# Future Concept Renewable Wilhelmsburg





## Future Concept Renewable Wilhelmsburg



## Building the City Anew



## Smart Material Houses SOFT HOUSE



<b>Architect</b>	Kennedy & Violich Architecture, Boston
<b>Investor</b>	Patrizia Immobilien AG
<b>Construction Period</b>	2011-2013
<b>Size</b>	4 units – gross space: 790 m <sup>2</sup> /8,500 sq feet, floor space: ca. 520 m <sup>2</sup>
<b>Standard</b>	Passive House
<b>Energy Concept</b>	Integrated PV modules in membrane on roof and over facade Solar thermal heating and DHW Geothermal heating and DHW

## Citizen Dialogue



## „Prima Klima“ Campaign



## Welcome to the IBA DOCK !



**Thank you very much  
for your kind attention**

---